

Full Week Prices for 2012 Friday to Friday

Short & Weekend Breaks 2012 (Minimum 3 nights)

(Extra night charge from £50)

Cottages	Woodpecker	Kingfisher & Swallow		
	(2Two Bed)	(One Bed)		
	Full week	3 Nights	Full week	3 nights

3rd Jan - 8th Feb	358	264	256	184
9th Feb-15th Feb	396	291	281	201
16th Feb-21st Mar	364	268	260	187
22nd Mar-28th Mar	424	310	269	193
29thMar-11thApr	503	355	335	248
12thApr-25thApr	438	320	396	212
26thApr-16thMay	465	329	322	230
17thMay-30thMay	497	351	351	259
31stMay-6th Jun	586	413	468	331
7thJun-13th Jun	585	413	406	298
14thJun-20thJun	585	413	413	303
21stJun-27thJun	617	435	442	323
28th Jun-4thJul	642	468	463	327
5th Jul-11th Jul	642	468	491	347
12th Jul-18th Jul	655	477	500	353
19thJul-22nd Aug	692	503	523	369
23rd Aug-29thAug	633	461	432	316
30thAug-5thSep	578	408	382	281
6th Sep-12th Sep	545	385	363	268
13th Sep-19th Sep	463	327	316	226
20th Sep-24th Oct	399	293	281	201
25th Oct-31st Oct	545	385	363	268
1st Nov-19th Dec	364	268	258	185
20th Dec-3rd Jan	620	480	470	353

The Cottages.

Swallow and Kingfisher Cottages

One double bedroom cottage sleeps 2 .
Open plan Lounge / Diner / Kitchen.
Well equipped including dishwasher.
TV and DVD player .

Bathroom with shower washbasin and WC.

Woodpecker Cottage.

Two bedded cottage sleeps 4.

One double room, and one twin room.

Open plan Lounge/Diner /Kitchen.

Well equipped kitchen with dishwasher.

TV and DVD player.

Bathroom with shower washbasin and WC.

Electricity/Gas included. Bed linen
and towels are provided at no extra charge.

Children are welcome. Highchair and cot
can be provided by prior arrangement.

Payphone on site. Sorry no dogs.

Library and Information room.

Comprehensive laundry room with washing
machine, dryer, iron and ironing board.

Clothes drying area.

Barbecue area and picnic bench.

Storage and boot room for fishing equipment

Free river fishing. Two fishing lakes.

We regret that smoking is not permitted.

Welcome pack on arrival.

Take-away continental breakfasts,
picnic lunches and cream teas available
with 24 hours notice please.

Cripps Farm Holiday Cottages.



Sue and Graham Harris.

Cripps Farm Caravan Park,

Merry Lane,

East Huntspill,

Nr Highbridge,

Somerset. TA9 3PS.

Tele: 01278 783762.

www.crippsfarmholidays.co.uk

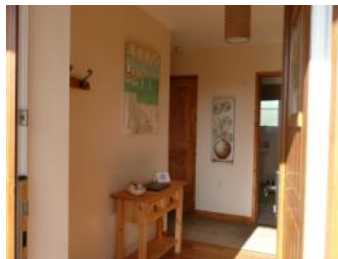
Email: crippsfarm@talktalk.net

www.ratethispark.co.uk/crippsfarm

Countryside walk



A warm welcome awaits you at Cripps Farm. We are a small family run business set in 56 acres of open farm land with a 1 mile countryside walk overlooking the Somerset levels. Set in an idyllic location on the confluence of the rivers Cripps and Brue. We diversified from a dairy farm to a holiday park in 2000 building the luxury cottages in 2011. **4 star gold award Enjoy England 2011.**



Booking Form and Conditions of Booking.

Each cottage may be occupied by not more than the number of persons stated on the booking form unless previously arranged.

The cottage may be occupied after 3pm on the day of arrival and must be vacated by 10am on the day of departure.

All damages and losses must be reported and paid for prior to departure.

We cannot accept any liability for accidents that may occur to guests, or loss or damage to their personal property whilst staying at Cripps Farm.

In the event of cancellation the balance of the rental will be payable. If we are able to re-let the cottage we will refund monies received less £25 for administrative costs incurred in re-letting the cottages. We advise that holiday insurance should be purchased to cover each eventuality. Links for insurance and information leaflet can be sent on request (www.world-first.co.uk)

Vehicles parked at Cripps Farm are parked entirely at the owners risk. A non-refundable deposit of £50 per week shall be enclosed with the booking form and the balance payable 28 days prior to arrival. Please make cheques payable to Cripps Farm Holiday Lets or pay by electronic transfer. (Please contact us for details and check availability first.)

www.crippsfarmholidays.co.uk

Cripps Farm Holiday Cottages.

Name

Address

Postcode

Telephone

Cottage s required:

Kingfisher Cottage (One bedroom twin)

Swallow Cottage (One bedroom double)

Woodpecker Cottage (Two bedrooms)

Inclusive dates from :

From / / 2012 To / / 2012

Adults Children

Deposit enclosed £50

Signature